

YUTTAH



Angle Sensor ANG8

www.yuttah.com

The sensor ANG8 is a precise angle sensor, using hall effect technology. The ANG8 provides angle measurement for all ranges up to 360 ° and available with Analog and Digital output options.

Technology

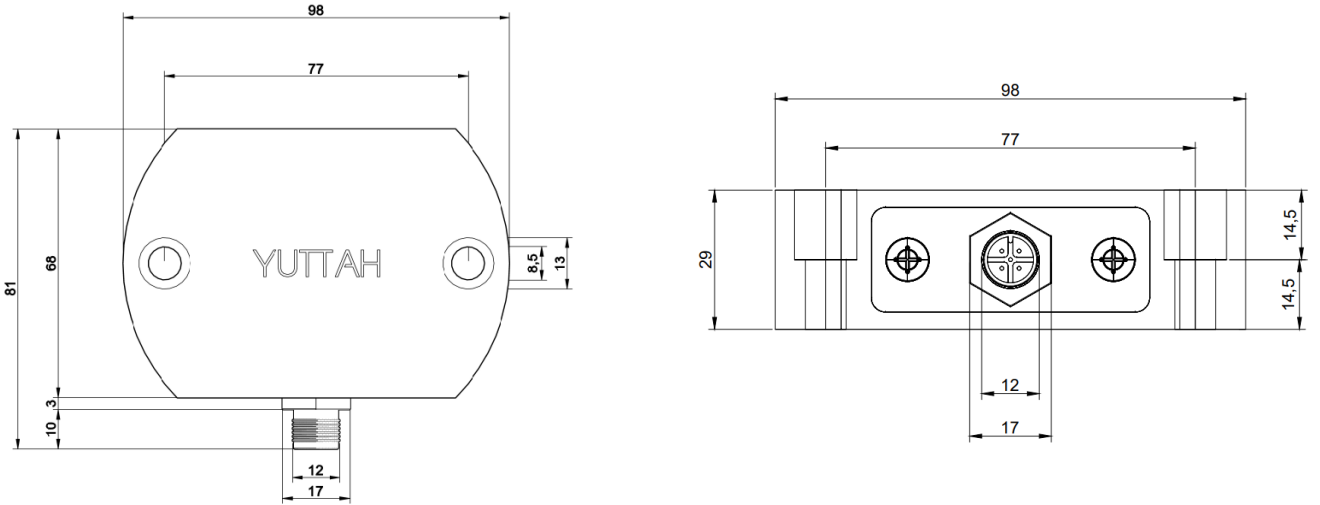
- High-precision angle sensor
- Hall effect technology
- Non-contact working principle
- With an external position magnet
- Available with all measurement ranges up to 360 °
- Available with Analog and Digital outputs
- Easy mounting and direct application



Specifications

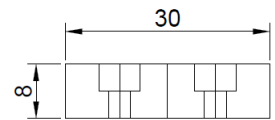
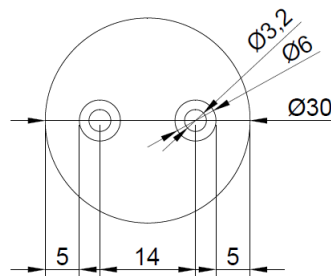
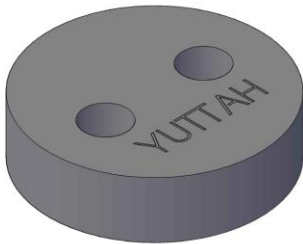
Measurement ranges	0 – 360 °
Output options	<ul style="list-style-type: none">• Analog Outputs: 4 – 20 mA, 0 – 10 V, 0 – 5 V• Digital Outputs: SSI, CANopen, RS422• Other interfaces: on request
Resolution	0.1°
Linearity	±0.5°
Supply Voltage	Flexible 8 – 36 VDC or 5 VDC (+/- 5%)
Excitation Current	max. 30 mA
Protection Class	IP67 / IP69
Operating Temperature	-40 °C to +85 °C
Housing	Stainless Steel 1.4404 (AISI 316L)
Mounting	M8 bolts
Weight	approx. 850 g
Shock	DIN EN 60068-2-27:2010, 100 g/11 ms, 100 shocks
Vibration	DIN EN 60068-2-6:2008, 20 g 10 Hz-2 kHz, 10 cycles
EMC	DIN EN 61326-1:2013

Drawings



Dimensions in mm

Position Magnet AMAG1



- Customer customized magnets available on request
- The dimensions are in mm

Order Codes / Analog Output

ANG8 - 2 - 3 - 4 - 5

1 Model

ANG8

2 Supply Voltage

SV1: Flexible 8 – 36 VDC
SV2: 5 VDC (+/- 5%)

3 Output

A1: 4 – 20 mA
A2: 0 – 10 V
A3: 0 – 5 V

4 Measurement range

0-360 °

5 Rotation direction

10: clockwise
20: counter clockwise

Example: ANG8 - SV1 - A1 - 90 - 10

Order Codes / CANopen Output

ANG8 - 2 - 3 - 4

1 **Model** ANG8

2 **Supply Voltage** SV1: Flexible 8 – 36 VDC
SV2: 5 VDC (+/- 5%)

3 **Output** CANopen

4 **Rotation direction** 10: clockwise
20: counter clockwise

Example: ANG8 - SV1 - CANopen - 10

Order Codes / SSI Output

ANG8 - 2 - 3 - 4

1	Model	ANG8
2	Supply Voltage	SV1: Flexible 8 – 36 VDC SV2: 5 VDC (+/- 5%)
3	Output	SSI (Serial Synchronous Interface)
4	Resolution	128, 256, 512, 1024, 2048, 4096, 8192

Example: ANG8 - SV1 - SSI - 1024

Order Codes / Incremental RS422 Output

ANG8 - 2 - 3 - 4

1 Model

ANG8

2 Supply Voltage

SV1: Flexible 8 – 36 VDC
SV2: 5 VDC (+/- 5%)

3 Output

RS422

4 Resolution

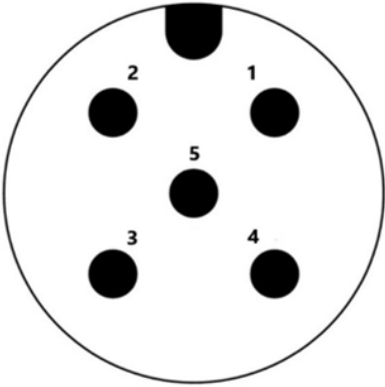
128, 256, 512, 1024, 2048, 4096,
8192

Example: ANG8 - SV1 - RS422 - 1024

PINOUT

Analog Output

M12 male connector, 5 pin



Connector pin no.

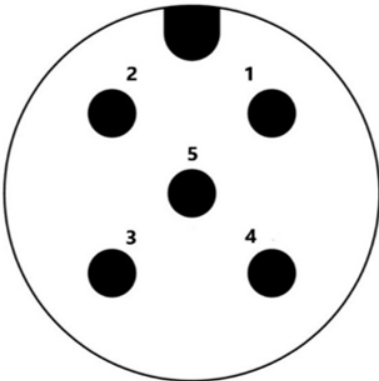
- 1
- 2
- 3
- 4
- 5

Output signals

- Excitation GND
- Output GND
- +V (excitation voltage)
- Analog output
- Do not connect

CANopen Output

M12 male connector, 5 pin



Connector pin no.

- 1
- 2
- 3
- 4
- 5

Output signals

- GND
- Do not connect
- +V (excitation voltage)
- CAN-H
- CAN-L

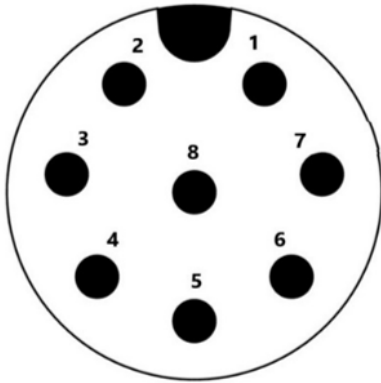
PINOUT

SSI Output

M12 male connector, 8 pin

Connector pin no.

Output signals



- 1
- 2
- 3
- 4
- 5
- 6
- 7
- 8

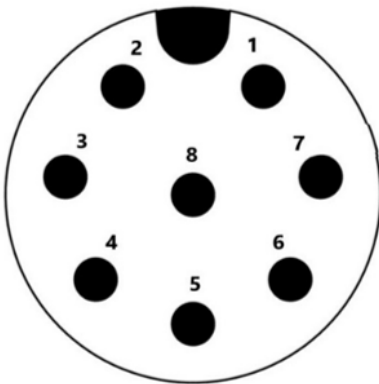
- GND
- Do not connect
- +V (excitation voltage)
- Data-
- Data
- Clock
- Clock-
- Do not connect

Incremental RS422 Output

M12 male connector, 8 pin

Connector pin no.

Output signals



- 1
- 2
- 3
- 4
- 5
- 6
- 7
- 8

- GND
- +V (excitation voltage)
- A
- A-
- B
- B-
- Z
- Z-

Advantages

- High precision
- High robustness
- High resistance against shocks and vibrations
- High protection class
- Non-contact technology
- Wear-free and maintenance-free
- Long lifetime
- Easy mounting and direct application
- Design flexibility

Applications

- Industrial Applications
- Industrial Vehicles
- Communal Vehicles
- Material Handling
- Forest and Agriculture Machines
- Heavy duty applications
- Power and Energy
- Medical
- Other Applications

YUTTAH

Copyright ©

YUTTAH (FZE)
A4-53, SAIF Zone
500001 Sharjah
United Arab Emirates

Website: www.yuttah.com

Email: info@yuttah.com

YUTTAH is a leading manufacturer of sensors, located in the United Arab Emirates. Our main product lines are: Position Sensors, Angle Sensors, Inclination Sensors, Acceleration Sensors, Vibration Sensors, Temperature Sensors, Pressure Sensors and Weight Sensors.

It is our main goal to help our customers to fulfil their needs. Our quality products are designed flexible to meet the application requirements of our customers. Our mission is to help our customers in the engineering phase to reach the wished results by providing customer customized sensor solutions. Our team is highly excited to help you in the stages of your development as well as providing a lifetime support. The combination of our know-how, quality products, flexible customized solutions, extensive lifetime support, and our experienced team is the right solution for you.

